



SERVICE PARTS LIST

| SPECIFY CATALOG NO. AND SERIAL NO. WHEN ORDERING PARTS | | REVISED BULLETIN | DATE |
|--|--------------------|------------------|--|
| M12™ FUEL™ 1/2" Impact Wrench w/ Friction Ring | | | Apr. 2018 |
| MODEL NO. | M12FIWF12-0 | 2555-20 | WIRING INSTRUCTION See Pages 2 & 3 |

EXAMPLE:
 Component Parts (Small #)
 Are Included When Ordering
 The Assembly (Large #).

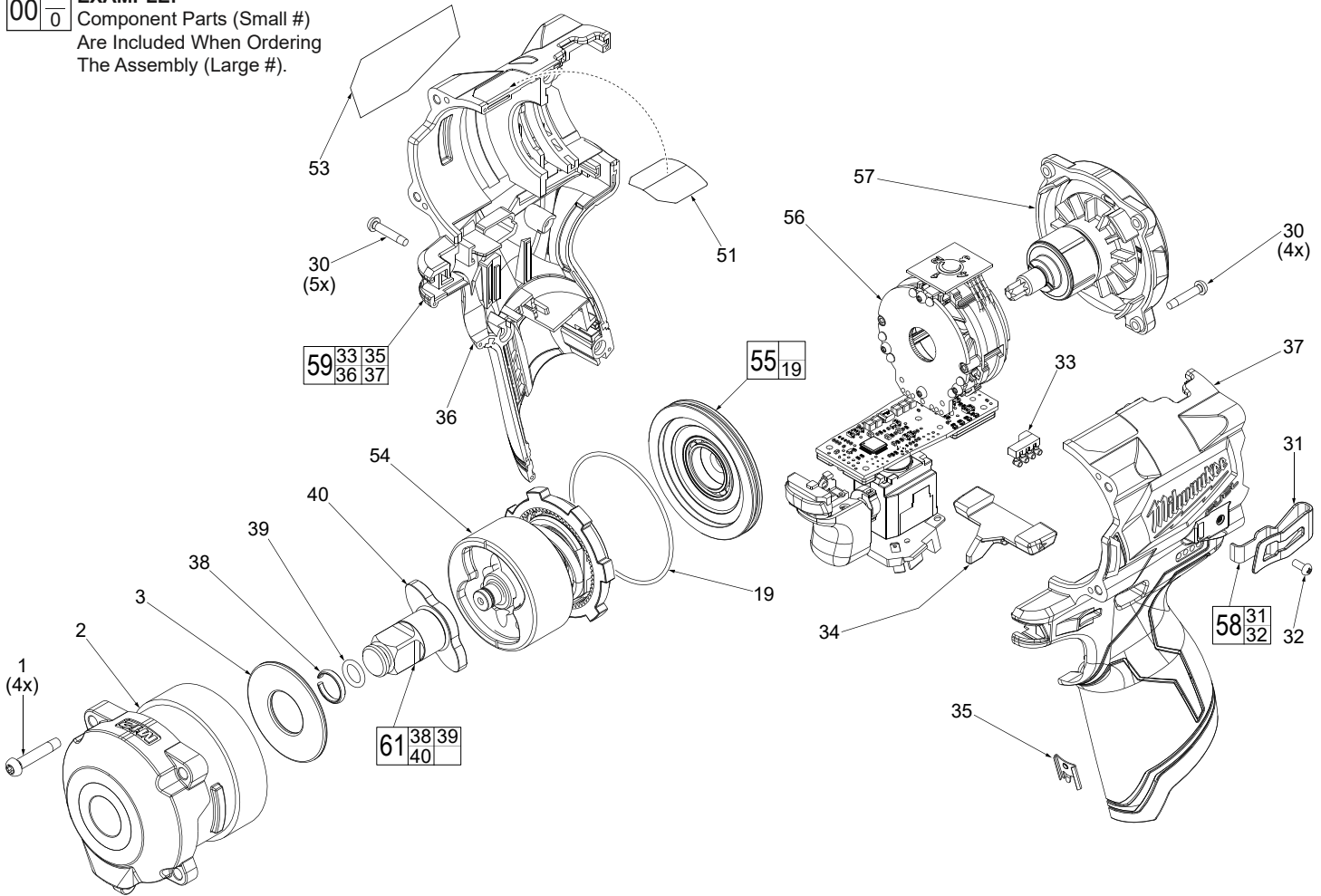


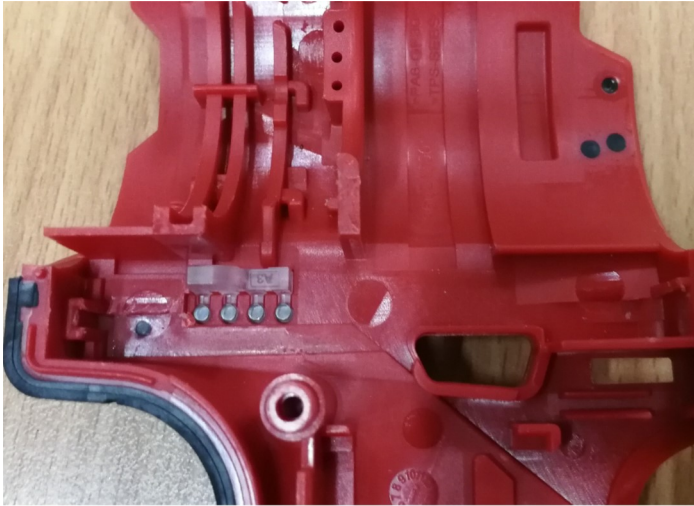
FIG. LUBRICATION
 (Type 'J' Grease, No. 49084220):

When servicing, remove 90-95% of the existing grease prior to installing Type 'J'. Original grease maybe similar in color but not compatible with 'J'.

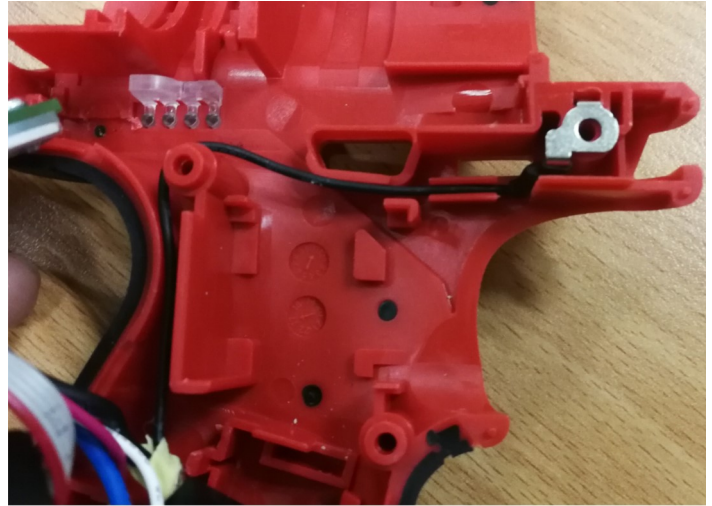
- 2 Coat anvil opening in the front of the gear case with grease.
- 3 Coat gear case washer with grease.
- 40 Lightly coat round shaft surface of anvil with grease. Place a dab of grease in cavity at rear of anvil.
- 54 Lightly coat the inside gear teeth of ring gear and the gear teeth of the planet gears of impacting assembly with grease.
- 57 Coat pinion of rotor/back cap assembly with grease.

| SCREW TORQUE SPECIFICATIONS | | | | |
|-----------------------------|------------|---------------------|-------------|----------|
| FIG. | PART NO. | WHERE USED | SEAT TORQUE | |
| | | | (KG/CM) | (IN/LBS) |
| 1 | 05-88-1255 | Front Gear Case | 14-17 | 12-14 |
| 30 | 06-82-6351 | Rotor/Back Cap | 6-8 | 5-6 |
| 30 | 06-82-6351 | Right Housing-Cover | 9-11 | 7-9 |
| 32 | 05-88-1015 | Belt Clip | 5-9 | 4-7 |

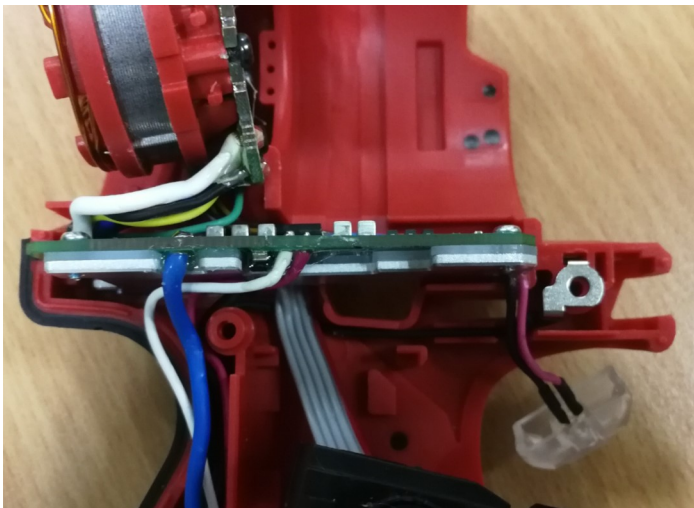
WIRING INSTRUCTIONS- one of two



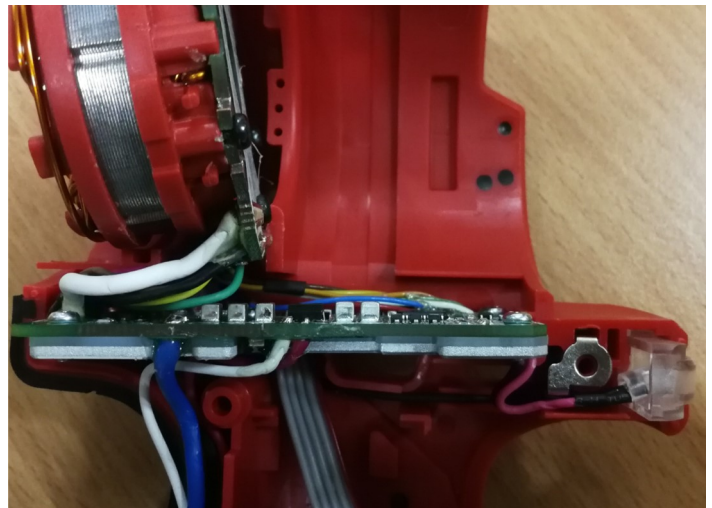
STEP 1: Insert light pipe in cavity of left housing half-support.



STEP 2: Assemble HV terminal over screw boss and route HV terminal wire through channels and traps as shown.



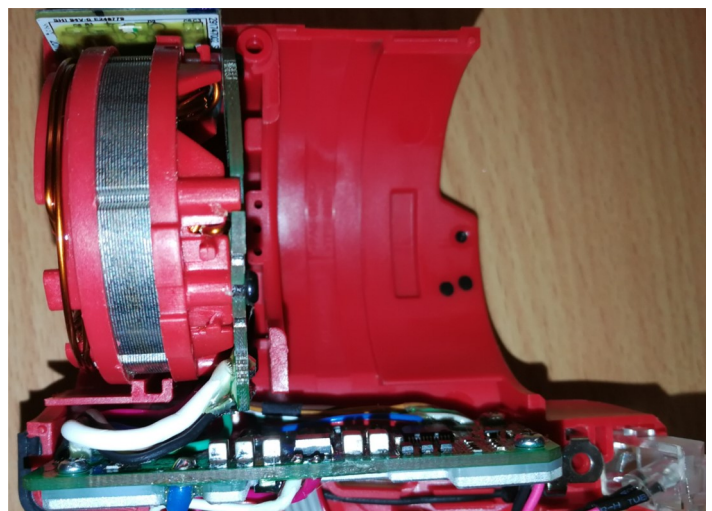
STEP 3: Assemble PCBA into corresponding housing cavity as shown.



STEP 4: Install LED lens and tuck LED wires down in housing cavity, over HV terminal wire.

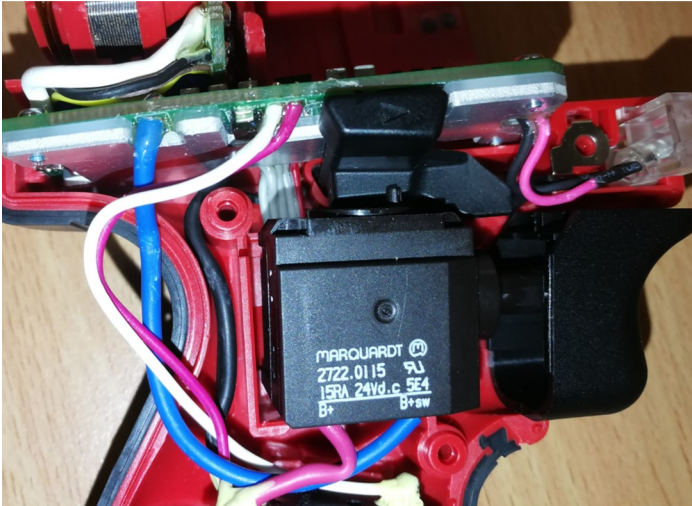


STEP 5: Install the pop switch into housing half as shown. Route wires through traps being sure wires are tucked completely down.

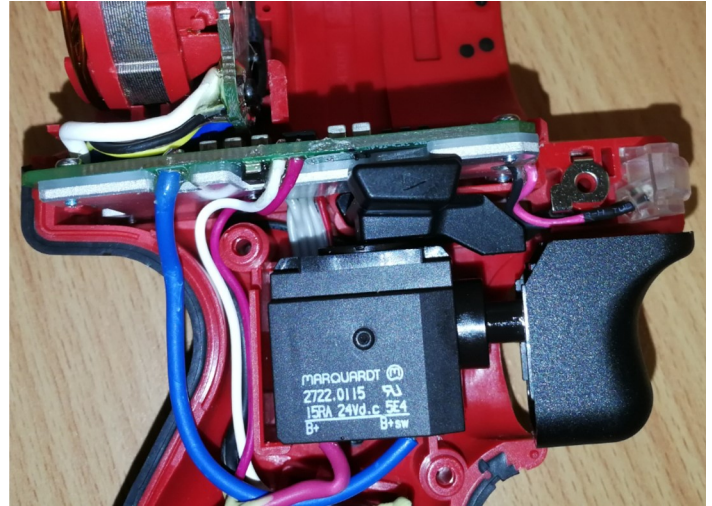


STEP 6: Assemble stator over pop switch wires. Be sure stator is seated firmly and squarely in housing half.

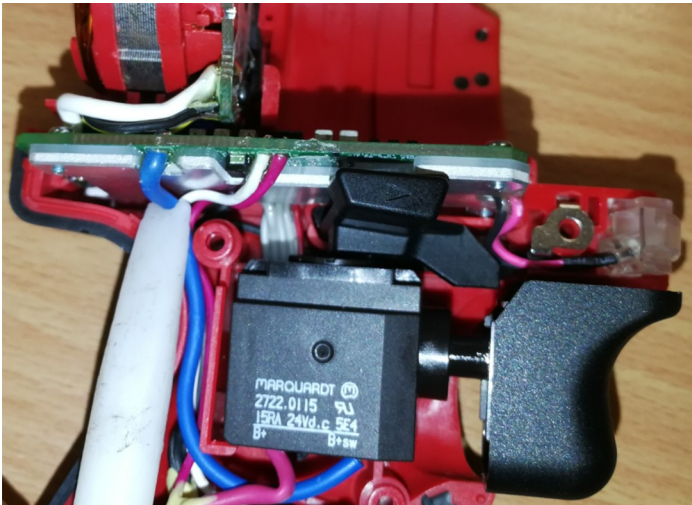
WIRING INSTRUCTIONS- two of two



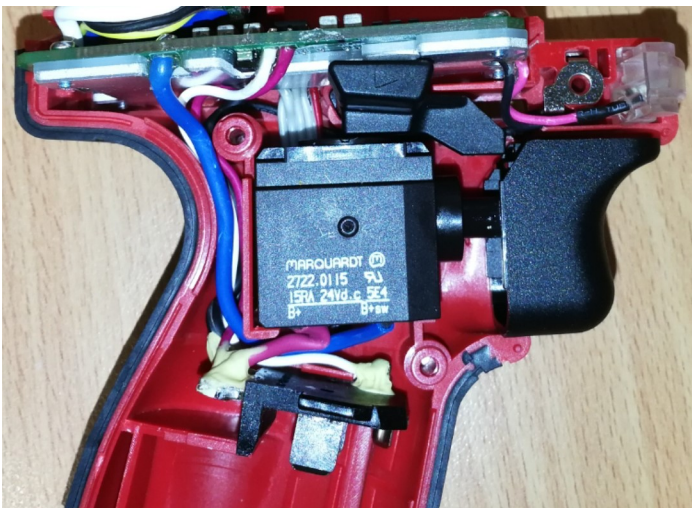
STEP 7: Install forward/reverse shuttle and on-off switch into left housing half-support. Be sure shuttle is properly seated over the forward/reverse tab on top of on-off switch.



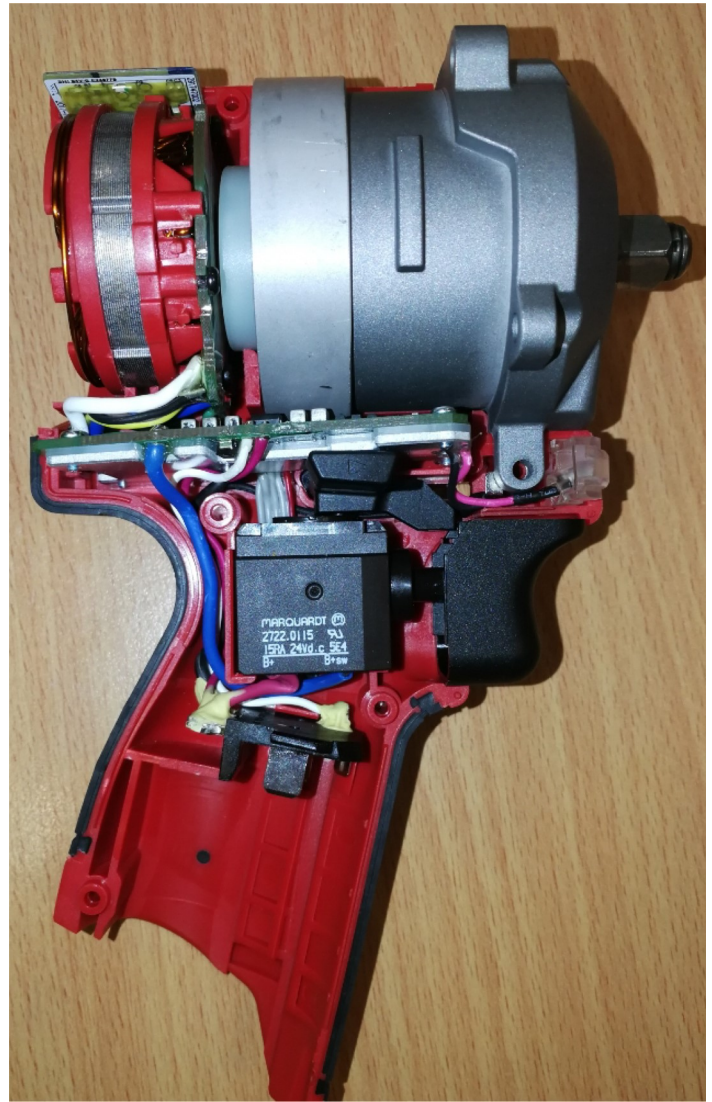
STEP 8: Route the PCBA wires connected with battery terminal into the wire channel of left housing as shown.



STEP 9: Use a plastic/nylon instrument to carefully press blue wire into housing cavity, over the battery terminal wires.



STEP 10: Install battery terminal block into the housing half being sure that it is firmly and squarely seated in the cavity.



STEP 11: Assemble the gear case assembly onto the left housing half and secure with two gear case screws.

Check that all elements of electronics assembly are seated properly and that all wires are pressed completely down in wire traps and channels.

Carefully install right housing half-cover onto left housing half-support. Secure with five housing half screws and the two remaining gear case screws. Install rotor back cap assembly and secure with four screws.

Check functionality of shuttle and on-off switch before installing battery.